



Presented by ESHA Research

Wednesday, October 14, 2020

11:00 AM PDT | 1:00 PM CDT | 2:00 PM EDT

ESHA Research

ESHA Research was established in 1981 as one of the very first nutrition software solutions. Today, ESHA's suite of nutritional software products, services, and databases are recognized as the industry's top choice for food and supplement formulation, recipe development, labeling, nutritional analysis, and regulatory compliance.

ESHA Solutions

Genesis R&D Foods

Upcoming Webinars

Stay tuned for upcoming webinars

Need a review?

View archived webinars at:

www.asha.com/news-events/webinars

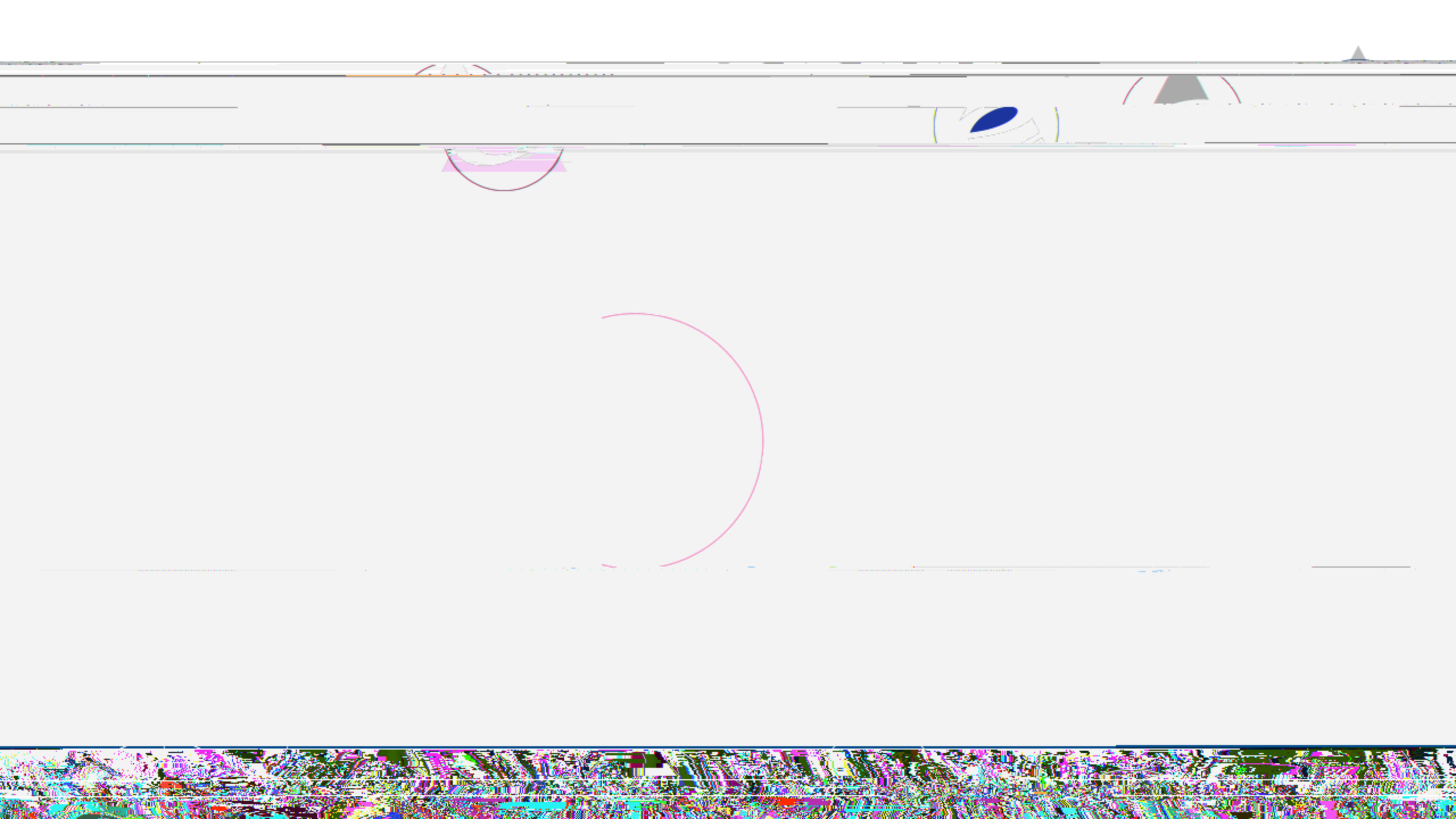
What we'll cover today

- Sulfites Declaration Requirements
- Sulfites Reporting
- Tracking Sulfites in Genesis R&D
- Q&A

Sulfites in Foods

- Some foods naturally contain sulfites
- For some foods, sulfiting agents are added to retain color, freshness, or other preservative effects
- Foods commonly containing sulfites and sulfiting agents
 - Processed meats or seafoods
 - Fermented, cured, or pickled foods
 - Dried foods
 - Vinegar and wine





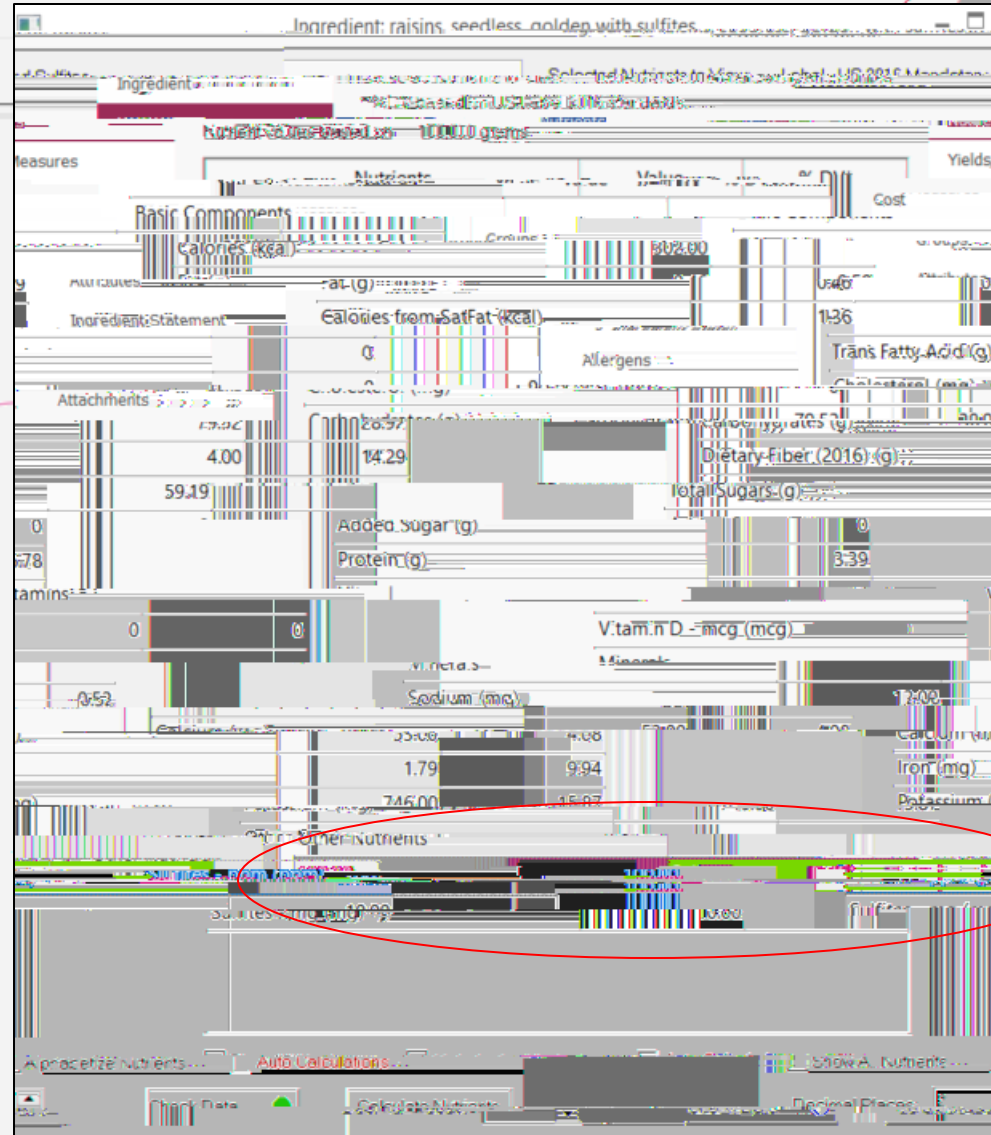
Nutrients to View



- Label - US 2016 Mandatory and Sulfites
- Label - US 2016 All – updated to include Sulfites

Sulfites – Viewing and Reporting on the Ingredient Screen

View sulfites information in the Ingredient record, the Recipe view, and on reports



View Sulfites on the Recipe Screen

The screenshot displays a recipe interface with the following details:

- Recipe name: `recipe: webmar bar sulfites`
- Number of Servings: 18.8 (40 g per serving)
- Weight: 752.02 g
- Search bar
- Advanced search options
- Table with columns: `Sulfites`, `Weight (g)`, `(ppm)`, `(mg)`, `ECIA Code`, `Total`, `Gen`, `Con`, `Tr`

The table contains one row of data:

Sulfites	Weight (g)	(ppm)	(mg)	ECIA Code	Total	Gen	Con	Tr
288-00	8125	1150	9375	288	Gram	000755		

A red circle highlights the `Total` column header in the table.

Reporting Sulfites - Spreadsheet

- Populate Ingredient records with proper Sulfites content
- When you use the Ingredients in your Recipes, Sulfites are reported in ppm and mg
- mg is calculated
- ppm = mg/kg
- View the Ingredient and Recipe detail on the

Sulfites Statement

- View Label and other reports with Labels
- Ingredient List

06/19/2020

Nutrition Facts

INGREDIENTS: Rolled Oats, Agave Syrup, Golden Raisins

Soda salt

Ingredients by Percent Weight Include in Print/Export

Percentage	Ingredient
38.3%	Rollled Oats
1.58%	Chia Seed
2.66%	Hemp Seeds
1.86%	Flax Seed Meal
0.0%	Baking Soda
0.20%	Baking Soda salt

Include in Print/Export

Ingredient Statement

INGREDIENTS: Rolled Oats, Agave Syrup, Golden Raisins (Raisins, Sulfites, Potassium Dioxide as a preservative), Water

Attributes – Contains Sulfites

- Use Attributes to indicate that an ingredient contains sulfites, even when the amount is not known
- Add "Contains Sulfites" attribute



Genesis R&D Training

Genesis R&D Training | December 1-

